

Tuu ane i luga lou ata

Laasaga 1. Faailoa lou suafa

www.inaturalist.nz

How It Works



Record your observations

Share with fellow naturalists

Discuss your findings

Laasaga 2. Tuu ane i luga lou ata

Drag & drop some photos or sounds

Upload

or

Choose files

Faamatalaga auiliili

- Faavasegaga i ituaiga eseese
- Aso ma le nofoaga na pu'e ai le ata
- Faamatalaga faaopoopo

The screenshot shows the 'Editing 1 observation' form. On the left, there are fields for 'Details', 'Species name', '2021/03/21 5:04 PM NZDT', 'Location', 'Notes', 'Location is public', 'Captive / Cultivated', 'Tags', 'Projects', 'Fields', and 'Offset Time'. On the right, there is a preview of the observation with a sunflower image and the same form fields.

Lagolago i su'esu'ega faa-le-natura



Uta i luga se ata ose la'au vao, ose meaola, poo se lega/limu



Ole a fesoasoani le polokalama a le faalopotopotoga o "iNaturalist's" e faaiola le ituaiga o la'au vao, manu fe'ai poo le lega/limu ua e utaina i luga



Fesoasoani i nisi tagata o galalue i galuega faa-le-natura ile faailoaina o latou matauga



O matauga taitasi ole a faatupula'ia ai faamaumauga o meaola eseese a le lalolagi

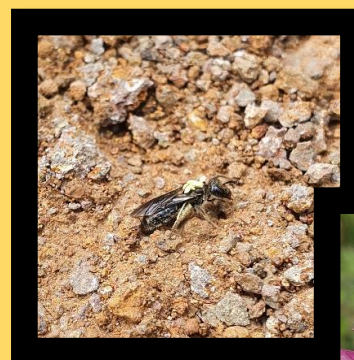


E maua ile "iOS Android" po o le "inaturalist.org"

O Se Lagomeli?

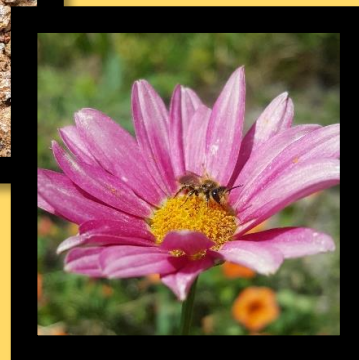
Is It A Bee?

E mafai ona e fa'aogaina le **inaturalist.nz** e fai ma meafaigaluega e su'esu'e ai lou tuafale!



Lasioglossum

iNaturalist ID: 141371167



Leioproctus

iNaturalist ID: 85930796



Laasaga 3. Faamaumau au matauga

Fai ma siaki e le aunoa e silasila i fa'amatalaga, o fautuaga, ma toe faaopoopo nisi faamatalaga.

Submit 1 observation

O lagomeli a Niu Sila

O lagomeli na faalauiloa i totonu o Niu Sila

O lagomeli o le "honey bee" ma le "bumble bee" na faalauiloa i totonu o Niu Sila mo le fefaasuaiga o fuga o laau. E fa'aagafesoota'i uma, ma e galulue i le tele o le tausaga (ae fa'aaitiitia i le taumalulu) ma faigofie ona iloa.



Honey Bee

iNaturalist ID: 140814940



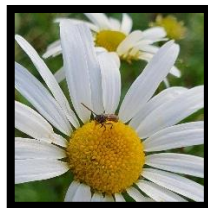
Bumble Bee

iNaturalist ID: 87552127

O nisi o lagomeli na faalauiloa e nofo to'atasi pe ofaga fa'atasi foi i lala laiti o laau po'o le palapala

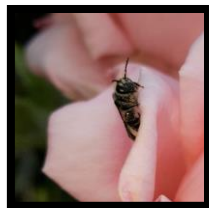
O lagomeli moni o Niu Sila

E 28 ituaiga lagomeli moni eseese i totonu o Niu Sila (ae 3 ni vaega tetele). E tele ina nonofo to'atasi, toe galulue ile vaiata e tofoga ai laau ma le vaiata mafanafana, ma e masani foi ona faaseseina o ni lago laiti.



Hylaeus

iNat ID: 129719438



Leioproctus

iNat ID: 86113136



Lasioglossum

iNat ID: 85929341

Follow us on social media!

otago.ac.nz/socialinsectlab/

@TheWaspLady



O fugalaau a lagomeli

Asteraceae

O lagomeli moni e fefaasuaia fuga o laau e masani ona maua i fugalaau mai ile ituaiga e ta'ua o le "Aster". (o nisi o nei fugalaau e ta'ua o le "daisy", dahlias, "vao" faapei o "dandelions" ma "ragwort")



Daisy

iNat ID: 85930260, 129719438, 85930980



"Vao"

iNat ID: 70447994, 85931172, 106823756

#LagomelimonioNiuSila

#NgaroHuruHuru

Fa'asoa au fa'amatalaga ile iNaturalist.nz, Instagram, ma le Twitter

#FeedTheBees

Toto ni fugalaau felanulanua'i e fiafia iai lagomeli.

#Tausilevao

#LeaveTheWeeds

Ia faataga fugalaau e ola ile vao e ola lausiusi



Ia e auai i su'esu'ega faale-natura!

Ia totoina ni fugalaau e fiafia iai lagomeli

E faapefea ona ou fesoasoani I le laveaina o lagomeli?

otago.ac.nz/socialinsectlab/Bees.html

O ni aoaoga e uiga i lagomeli o Niu Sila

Ia e alofa e puipuia lagomeli

fortheLoveofBees.co.nz/native-bees

Te Ara - o lagomeli moni o Niu Sila

teara.govt.nz/en/wasps-and-bees/page-4

Lagomeli moni o Niu Sila: O tala feaveai?

aucklandecology.com/2016/04/08/native-beeswhats-the-buzz/

Faasoa au su'esu'ega!

E silia I le 37 miliona su'esu'ega o lagomeli moni o Niu Sila ua uma ona tuuina mai ile "iNaturalist"!

inaturalist.nz

O togi ta'itasi i luga o leni fa'afanua o lo'o fa'aalia ai le nofoaga o lo'o va'aia ai lagomeli ta'itasi i totonu o Niu Sila

