

## me pehea te tuku ake i o pikitia

### Ko te tāhirā tuatahi: haina

www.inaturalist.nz

How It Works



Record your observations

Share with fellow naturalists

Discuss your findings

### Ko te tāhirā tuarua: Tukuna ake to pikitia

toia me te whakataka etahi pikitia, oro ranei  
Drag & drop some photos or sounds

Upload

or

Choose files

tāpiri whakāhuatanga

- Whakarōpūtanga
- Te ra me te wāhi o te pikitia
- Tuhinga tāpiri

### Ko te tāhirā tuatoru: tuku tetahi tirohanga

Tirohia hoki ki te tiro i nga korero, nga tohu tohu, me te tāpiri atu

Submit 1 observation

## TAKOHA KI TE PŪTAIAO TANGATA WHENUA



Tukuna he pikitia o tetahi tipu mohoao, kararehe, harore ranei



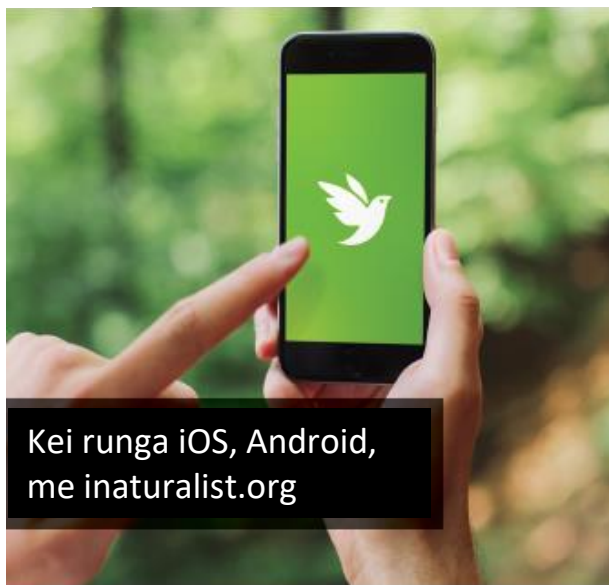
Ma te hāpori o te iNaturalist me te rorohiko tohu whakāhua ka awhina koe ki te tautuhi i tera.



Awhina i etahi atu tangata maori ma te tautuhi i o rātau kitenga.



Ko nga tirohanga katoa ka whai wāhi ki te tipu haere o nga rekoata mo te rereketanga o te Ao.

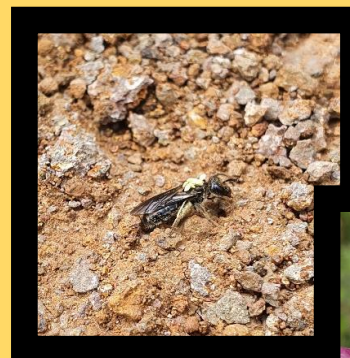


Kei runga iOS, Android,  
me inaturalist.org

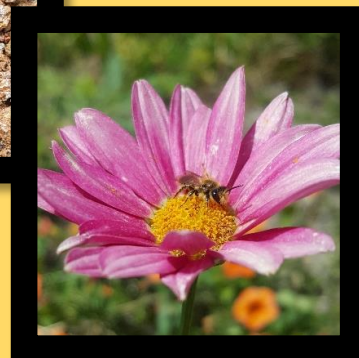
# He Pi Tena?

Is It A Bee?

Ka taea e koe te whakamahi **iNaturalist.nz** ki te kite i to ake iari



*Lasioglossum*  
iNaturalist ID: 141371167



*Leioproctus*  
iNaturalist ID: 85930796

 **iNaturalist**

# Pi o Aotearoa

## Pi whakaurua

He honi pi me te pi rarohū i whakaurua ki Aotearoa ki te ruinga hae. He pāpori nga mea e rua, he kaha te nuinga o te tau (he iti ake i te takuru), he ngawari ki te tautuhi.



**Pi honi**

iNaturalist ID: 140814940



**Pi rarohū**

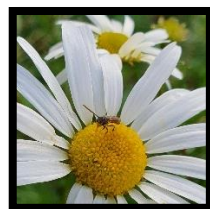
iNaturalist ID: 87552127

Ko etahi o nga pi i whakaurua he mokemoke, he tangata tahi ranei, ka noho kohanga ki roto i nga manga, i te oneone ranei

## Pi maori (Ngaro huruhuru)

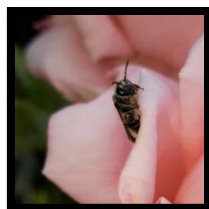
E rua tekau ma waru nga momo o Aotearoa (e toru nga puninga) o ngaro huruhuru (pi maori).

He mokemoke ratou, he kaha i te puna me te raumati, a he maha nga wa ka pohehehia he namu iti.



**Hylaeus**

iNat ID: 129719438



**Leioproctus**

iNat ID: 86113136



**Lasioglossum**

iNat ID: 85929341

## Whai ia matou i runga i nga pāpori pāpori!

[otago.ac.nz/socialinsectlab/](http://otago.ac.nz/socialinsectlab/)

@TheWaspLady



# Putiputi ki te ngaro huruhuru

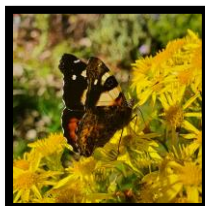
## Asteraceae

Ka kitea nga kawae hae momo maori ki nga puawai o te whanau Aster (hei tauira, daisies, dahlias, "taru" rite aihere me te ragwort).



## Daisy

iNat ID: 85930260, 129719438, 85930980



## Taru

iNat ID: 70447994, 85931172, 106823756

## #NgaroHuruhuru

Tuhia o tirohanga ki iNaturalist.nz, Instagram, me Twitter



## #FeedTheBees

Whakatokia nga putiputi karakara ki te pi



## #LeaveTheWeeds

Tukua nga putiputi mohoaio kia pua



# Hono mai ki ta mātau Kaupapa Tangata Putaiaio!

## Whakatokia nga putiputi pai ki te pi!

Me pehea taku awahina ki te whakaora i nga pi?

[otago.ac.nz/socialinsectlab/Bees.html](http://otago.ac.nz/socialinsectlab/Bees.html)

## Ako atu mo nga pi o Aotearoa!

Mo te aroha o nga pi

[fortheloveofbees.co.nz/native-bees](http://fortheloveofbees.co.nz/native-bees)

## Te Ara – Nga pi maori o Aotearoa

[teara.govt.nz/en/wasps-and-bees/page-4](http://teara.govt.nz/en/wasps-and-bees/page-4)

## Nga pi maori: he aha te ngangau?

[aucklandecology.com/2016/04/08/native-beeswhats-the-buzz/](http://aucklandecology.com/2016/04/08/native-beeswhats-the-buzz/)

## Whakawhitihia o tirohanga!

Neke atu i te toru tekau ma whitu miriona nga kitenga o nga pi i Aotearoa kua tukuna ki te iNaturalist!

## inaturalist.nz

Ko ia ira o tenei mapi iNaturalist e whakātu ana i te wāhi o ia tirohanga pi ki Aotearoa.

